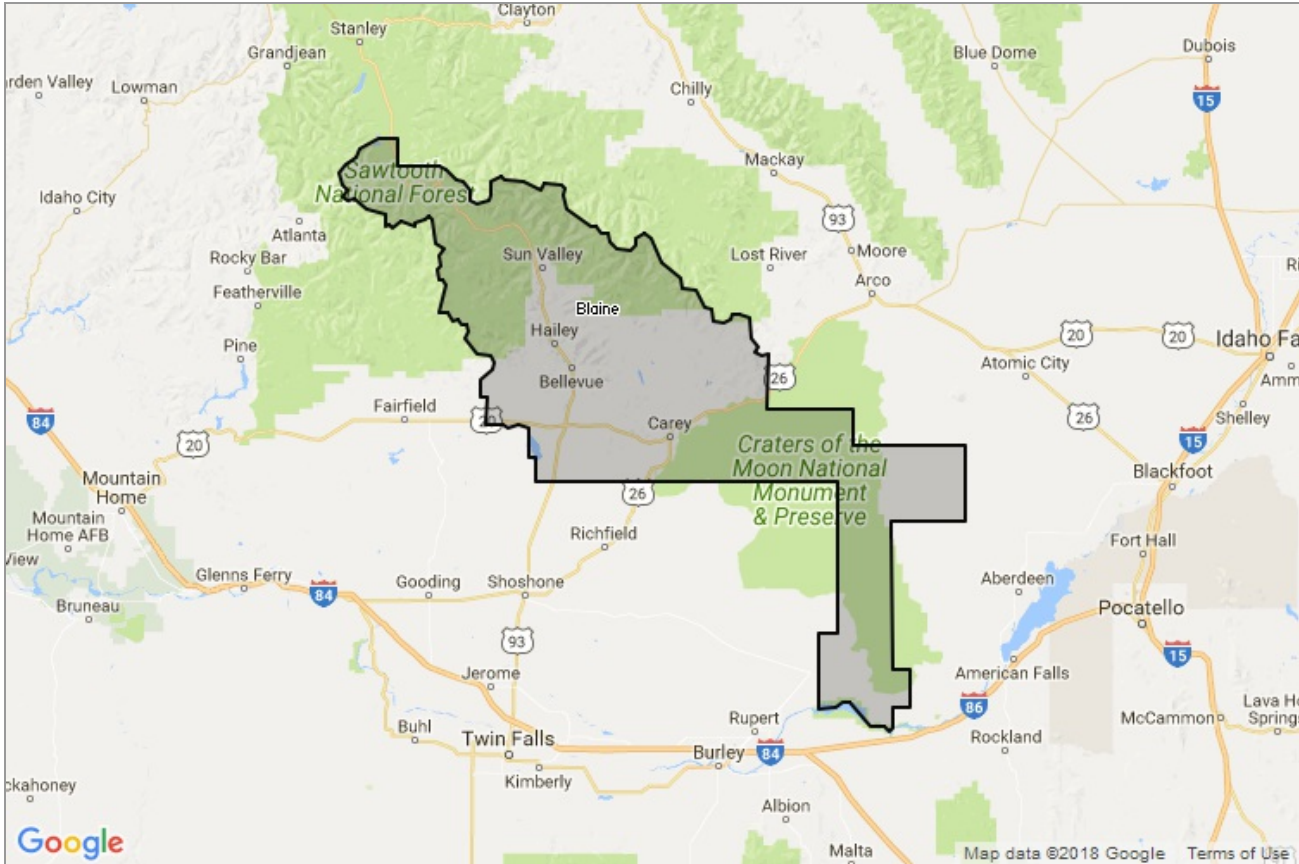




MARKET DATA REPORT

Monthly Market Data Report

amanda@sunvalleyrealtors.org



Report Characteristics

Report Name:
Monthly Market Data Report

Report Date Range:
1/2017 – 1/2018

Filters Used:
Property Type, Location

Avg/Med: Both

Run Date: 02/07/2018

Scheduled: Yes

Presented by

Sun Valley Board of REALTORS®
REALTOR®

(208) 726-7764

<http://sunvalleyidahorealestate.com/>

P O Box 1937
200 East River Street # 2
Ketchum, ID 83340

Summary of Key Listing and Sales Metrics

A summary of the key metrics selected to be included in the report. MLS sources where licensed.

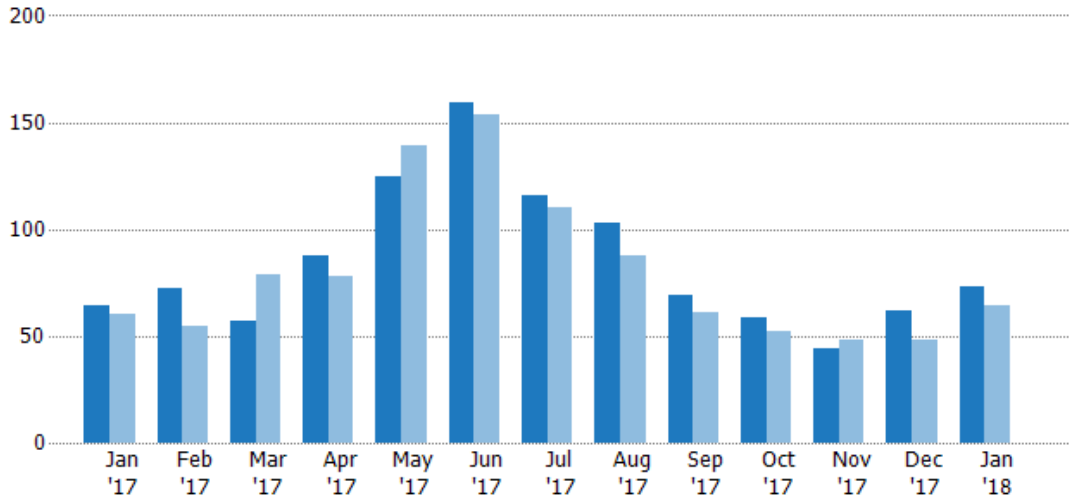
Key Metrics	Jan 2018	Jan 2017	+ / -	YTD 2018	YTD 2017	+ / -
Listing Activity Charts Metrics						
New Listing Count	73	64	+14.1%	1,091	1,036	+5.3%
New Listing Volume	\$140,935,400	\$78,197,200	+80.2%	\$1,262,580,180	\$1,135,046,229	+11.2%
Active Listing Count	393	501	-21.6%	6,437	7,496	-14.1%
Active Listing Volume	\$728,434,445	\$768,435,245	-5.2%	\$10,337,498,543	\$10,620,369,403	-2.7%
Average Listing Price	\$1,853,523	\$1,533,803	+20.8%	\$1,605,950	\$1,416,805	+13.4%
Median Listing Price	\$969,000	\$750,000	+29.2%	\$818,455	\$735,365	+11.3%
Average Listing Price per Sq Ft	\$476	\$434	+9.8%	\$443	\$410	+8.1%
Median Listing Price per Sq Ft	\$403	\$357	+12.9%	\$365	\$347	+5.2%
Median Days in RPR	166	186	-10.8%	138.54	159.15	-13%
Months of Inventory	11.2	15.2	-26%	13.1	23.9	-45.1%
Absorption Rate	8.91%	6.59%	+2.3%	7.63%	4.19%	+3.4%
Sales Activity Charts Metrics						
Pending Sales Count	92	71	+29.6%	1,215	1,121	+8.4%
Pending Sales Volume	\$90,990,599	\$90,305,300	+0.8%	\$1,276,156,422	\$1,016,456,844	+25.5%
Closed Sales Count	29	30	-3.3%	667	565	+18.1%
Closed Sales Volume	\$18,976,499	\$29,399,426	-35.5%	\$481,845,992	\$330,683,860	+45.7%
Average Sales Price	\$654,362	\$979,981	-33.2%	\$725,708	\$587,209	+23.6%
Median Sales Price	\$425,000	\$625,800	-32.1%	\$447,964	\$362,713	+23.5%
Average Sales Price per Sq Ft	\$412	\$347	+18.5%	\$341	\$287	+18.9%
Median Sales Price per Sq Ft	\$348	\$329	+5.8%	\$292	\$244	+19.7%
Distressed Charts Metrics						
Distressed Listing Count	-	3	-	26	87	-70.1%

New Listings

The number of new single-family, condominium and townhome listings that were added each month.

Filters Used

State: ID
 County: Blaine County, Idaho
 Property Type:
 Condo/Townhouse/Apt, Single Family Residence



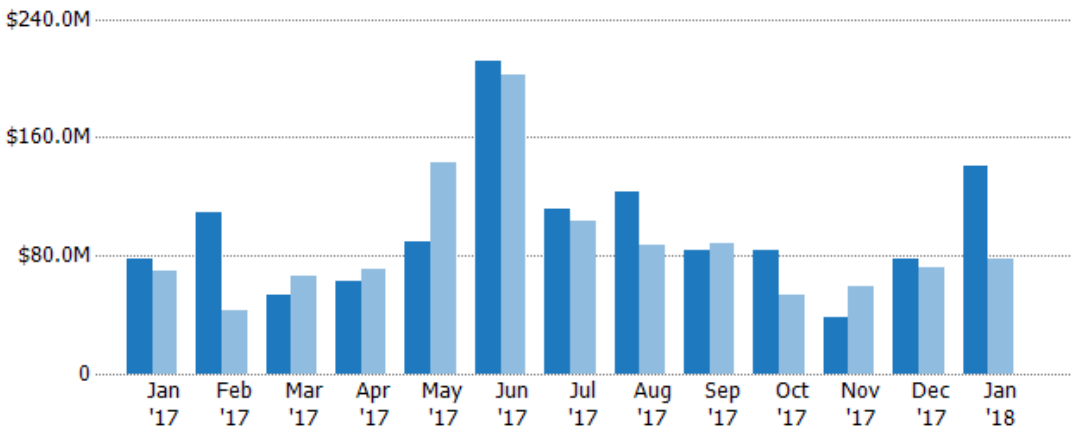
	Jan '17	Feb '17	Mar '17	Apr '17	May '17	Jun '17	Jul '17	Aug '17	Sep '17	Oct '17	Nov '17	Dec '17	Jan '18
Current Year	64	72	57	88	125	159	116	103	69	59	44	62	73
Prior Year	60	55	79	78	139	154	110	88	61	52	48	48	64
Percent Change from Prior Year	7%	31%	-28%	13%	-10%	3%	5%	17%	13%	13%	-8%	29%	14%

New Listing Volume

The sum of the listing price of single-family, condominium and townhome listings that were added each month.

Filters Used

State: ID
 County: Blaine County, Idaho
 Property Type:
 Condo/Townhouse/Apt, Single Family Residence



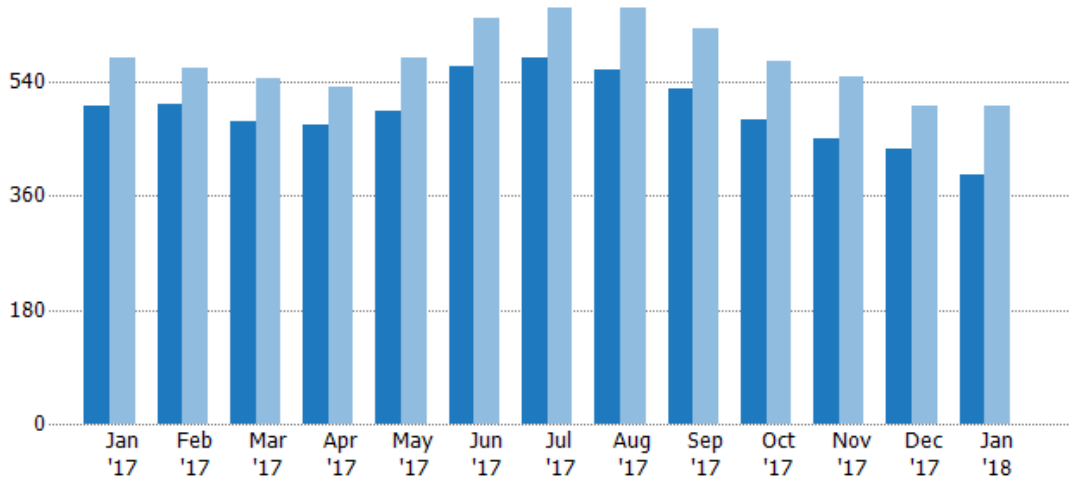
	Jan '17	Feb '17	Mar '17	Apr '17	May '17	Jun '17	Jul '17	Aug '17	Sep '17	Oct '17	Nov '17	Dec '17	Jan '18
Current Year	\$78.2M	\$109M	\$52.9M	\$63.2M	\$89.6M	\$212M	\$112M	\$123M	\$83.1M	\$83.7M	\$38.2M	\$77.2M	\$141M
Prior Year	\$69.4M	\$42.9M	\$66.2M	\$70.9M	\$143M	\$202M	\$103M	\$87.2M	\$88.6M	\$53M	\$58.9M	\$71.6M	\$78.2M
Percent Change from Prior Year	13%	155%	-20%	-11%	-37%	5%	8%	41%	-6%	58%	-35%	8%	80%

Active Listings

The number of active single-family, condominium and townhome listings at the end of each month.

Filters Used

State: ID
 County: Blaine County, Idaho
 Property Type:
 Condo/Townhouse/Apt, Single
 Family Residence



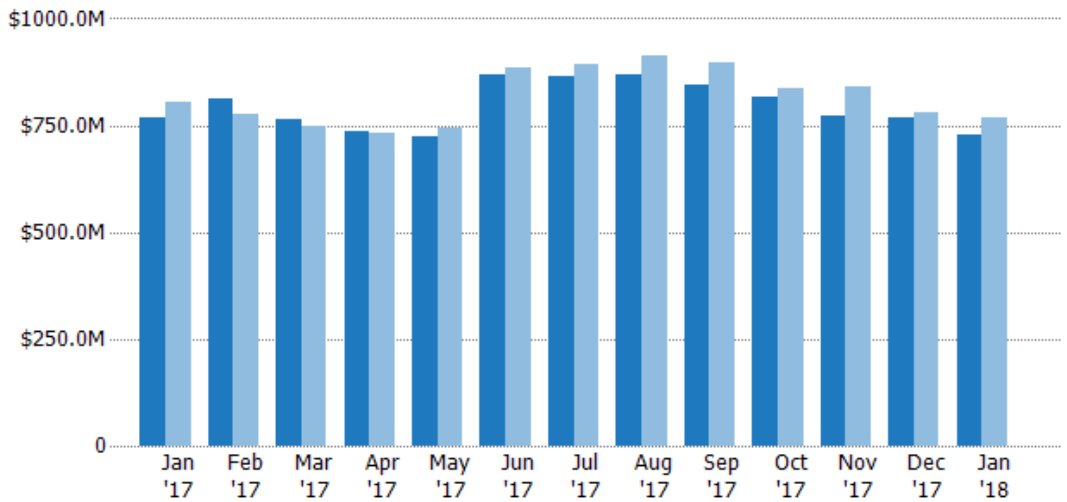
	Jan '17	Feb '17	Mar '17	Apr '17	May '17	Jun '17	Jul '17	Aug '17	Sep '17	Oct '17	Nov '17	Dec '17	Jan '18
Current Year	501	505	478	472	495	564	577	559	529	481	449	434	393
Prior Year	579	562	546	531	577	640	656	656	624	573	548	503	501
Percent Change from Prior Year	-13%	-10%	-12%	-11%	-14%	-12%	-12%	-15%	-15%	-16%	-18%	-14%	-22%

Active Listing Volume

The sum of the listing price of active single-family, condominium and townhome listings at the end of each month.

Filters Used

State: ID
 County: Blaine County, Idaho
 Property Type:
 Condo/Townhouse/Apt, Single
 Family Residence



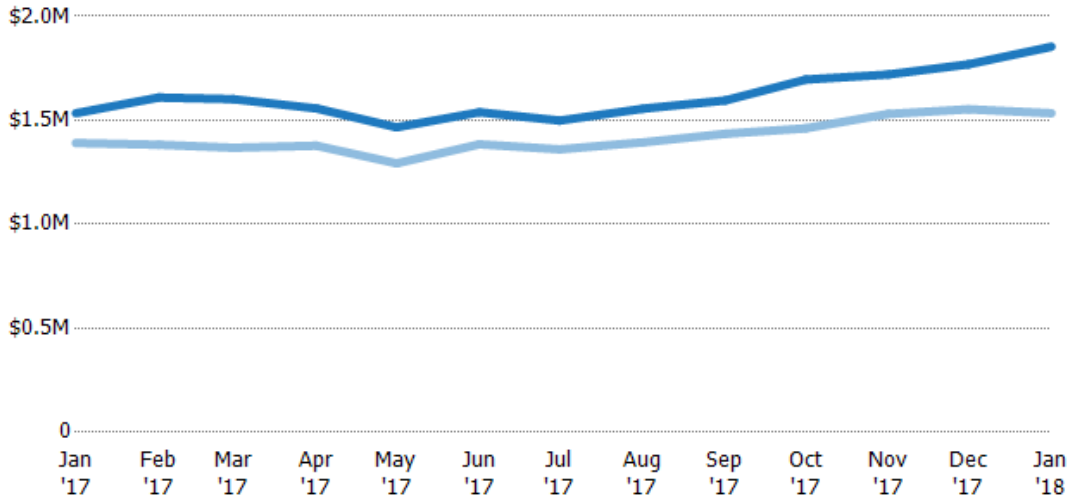
	Jan '17	Feb '17	Mar '17	Apr '17	May '17	Jun '17	Jul '17	Aug '17	Sep '17	Oct '17	Nov '17	Dec '17	Jan '18
Current Year	\$768M	\$813M	\$766M	\$735M	\$726M	\$868M	\$865M	\$870M	\$844M	\$816M	\$772M	\$768M	\$728M
Prior Year	\$805M	\$777M	\$747M	\$732M	\$746M	\$886M	\$892M	\$914M	\$895M	\$837M	\$839M	\$781M	\$768M
Percent Change from Prior Year	-5%	5%	2%	0%	-3%	-2%	-3%	-5%	-6%	-3%	-8%	-2%	-5%

Average Listing Price

The average listing price of active single-family, condominium and townhome listings at the end of each month.

Filters Used

State: ID
 County: Blaine County, Idaho
 Property Type:
 Condo/Townhouse/Apt, Single
 Family Residence



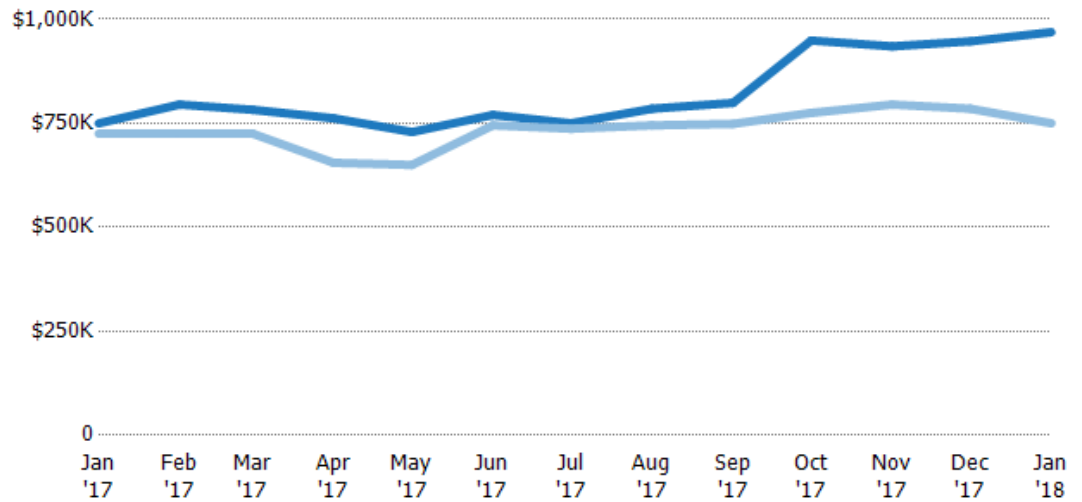
	Jan '17	Feb '17	Mar '17	Apr '17	May '17	Jun '17	Jul '17	Aug '17	Sep '17	Oct '17	Nov '17	Dec '17	Jan '18
Current Year	\$1.53M	\$1.61M	\$1.6M	\$1.56M	\$1.47M	\$1.54M	\$1.5M	\$1.56M	\$1.6M	\$1.7M	\$1.72M	\$1.77M	\$1.85M
Prior Year	\$1.39M	\$1.38M	\$1.37M	\$1.38M	\$1.29M	\$1.38M	\$1.36M	\$1.39M	\$1.44M	\$1.46M	\$1.53M	\$1.55M	\$1.53M
Percent Change from Prior Year	10%	16%	17%	13%	13%	11%	10%	12%	11%	16%	12%	14%	21%

Median Listing Price

The median listing price of active single-family, condominium and townhome listings at the end of each month.

Filters Used

State: ID
 County: Blaine County, Idaho
 Property Type:
 Condo/Townhouse/Apt, Single
 Family Residence



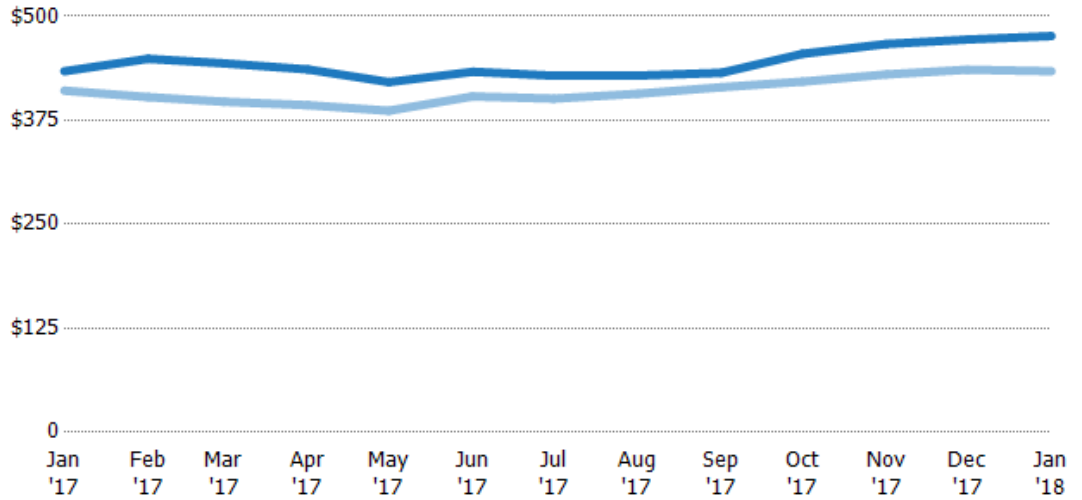
	Jan '17	Feb '17	Mar '17	Apr '17	May '17	Jun '17	Jul '17	Aug '17	Sep '17	Oct '17	Nov '17	Dec '17	Jan '18
Current Year	\$750K	\$795K	\$783K	\$762K	\$729K	\$770K	\$750K	\$785K	\$799K	\$949K	\$935K	\$947K	\$969K
Prior Year	\$725K	\$725K	\$725K	\$655K	\$650K	\$745K	\$737K	\$745K	\$749K	\$775K	\$795K	\$785K	\$750K
Percent Change from Prior Year	3%	10%	8%	16%	12%	3%	2%	5%	7%	22%	18%	21%	29%

Average Listing Price per Sq Ft

The average of listing prices divided by the living area of homes on market at the end of each month.

Filters Used

State: ID
 County: Blaine County, Idaho
 Property Type:
 Condo/Townhouse/Apt, Single
 Family Residence



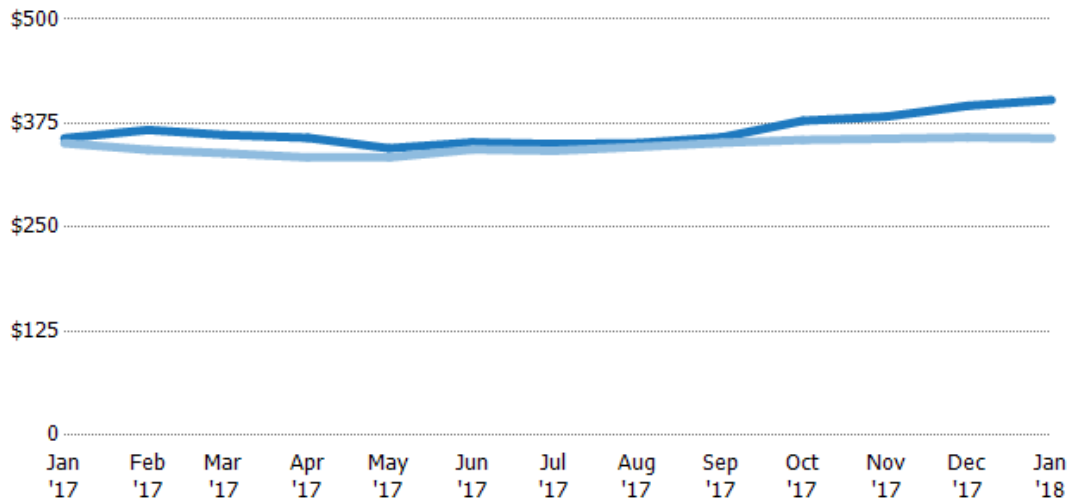
	Jan '17	Feb '17	Mar '17	Apr '17	May '17	Jun '17	Jul '17	Aug '17	Sep '17	Oct '17	Nov '17	Dec '17	Jan '18
Current Year	\$434	\$449	\$443	\$436	\$421	\$433	\$429	\$429	\$432	\$455	\$467	\$472	\$476
Prior Year	\$411	\$403	\$397	\$393	\$386	\$404	\$401	\$407	\$415	\$421	\$430	\$436	\$434
Percent Change from Prior Year	6%	11%	12%	11%	9%	7%	7%	5%	4%	8%	9%	8%	10%

Median Listing Price per Sq Ft

The median of listing prices divided by the living area of homes on market at the end of each month.

Filters Used

State: ID
 County: Blaine County, Idaho
 Property Type:
 Condo/Townhouse/Apt, Single
 Family Residence



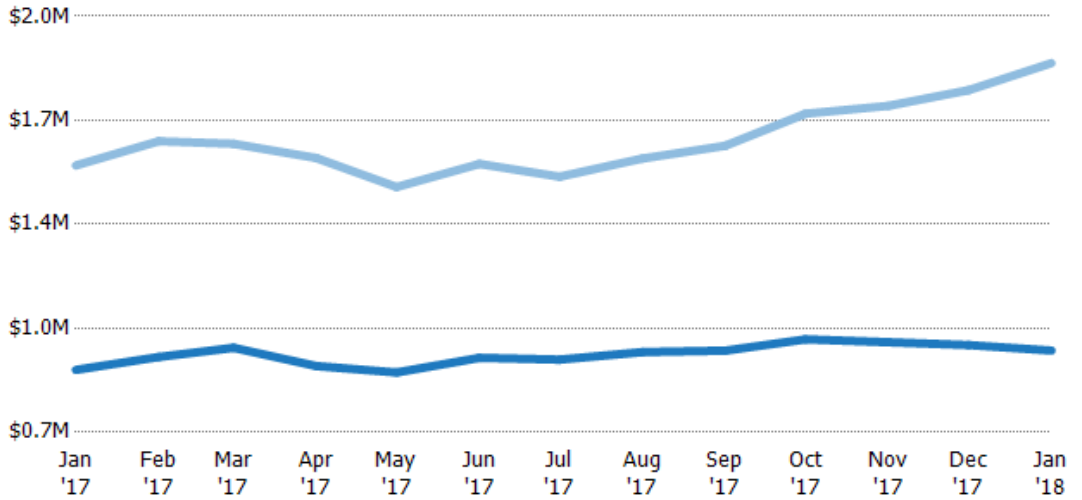
	Jan '17	Feb '17	Mar '17	Apr '17	May '17	Jun '17	Jul '17	Aug '17	Sep '17	Oct '17	Nov '17	Dec '17	Jan '18
Current Year	\$357	\$367	\$361	\$358	\$345	\$352	\$350	\$351	\$358	\$378	\$383	\$396	\$403
Prior Year	\$351	\$343	\$339	\$334	\$334	\$344	\$342	\$347	\$352	\$355	\$357	\$358	\$357
Percent Change from Prior Year	2%	7%	6%	7%	3%	2%	2%	1%	2%	6%	7%	11%	13%

Average Listing Price vs Average Est Value

The average listing price as a percentage of the average AVM or RVM® valuation estimate for active listings each month.

Filters Used

State: ID
 County: Blaine County, Idaho
 Property Type:
 Condo/Townhouse/Apt, Single
 Family Residence



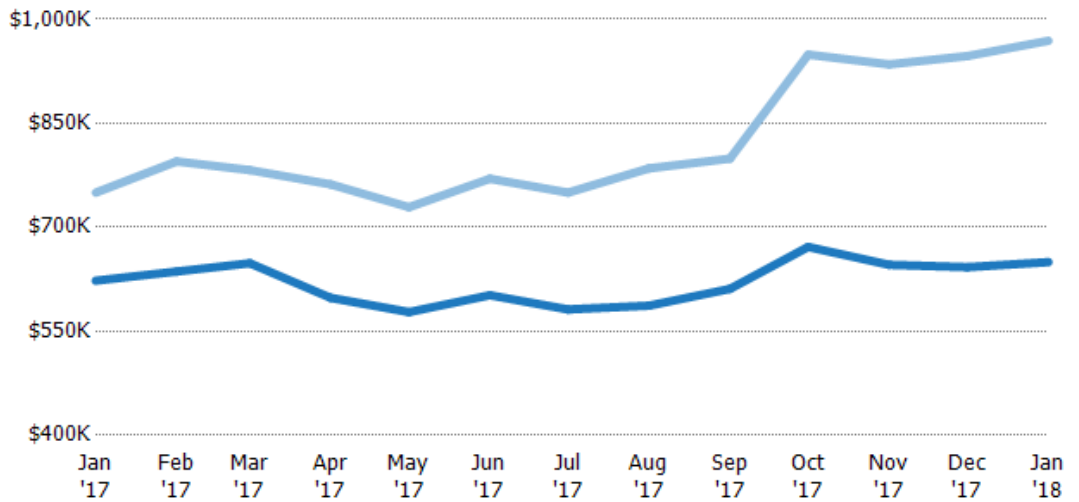
Avg Est Value	\$895K	\$935K	\$964K	\$907K	\$887K	\$933K	\$927K	\$950K	\$955K	\$990K	\$982K	\$973K	\$955K
Avg Listing Price	\$1.53M	\$1.61M	\$1.6M	\$1.56M	\$1.47M	\$1.54M	\$1.5M	\$1.56M	\$1.6M	\$1.7M	\$1.72M	\$1.77M	\$1.85M
Avg Listing Price as a % of Avg Est Value	171%	172%	166%	172%	165%	165%	162%	164%	167%	171%	175%	182%	194%

Median Listing Price vs Median Est Value

The median listing price as a percentage of the median AVM or RVM® valuation estimate for active listings each month.

Filters Used

State: ID
 County: Blaine County, Idaho
 Property Type:
 Condo/Townhouse/Apt, Single
 Family Residence



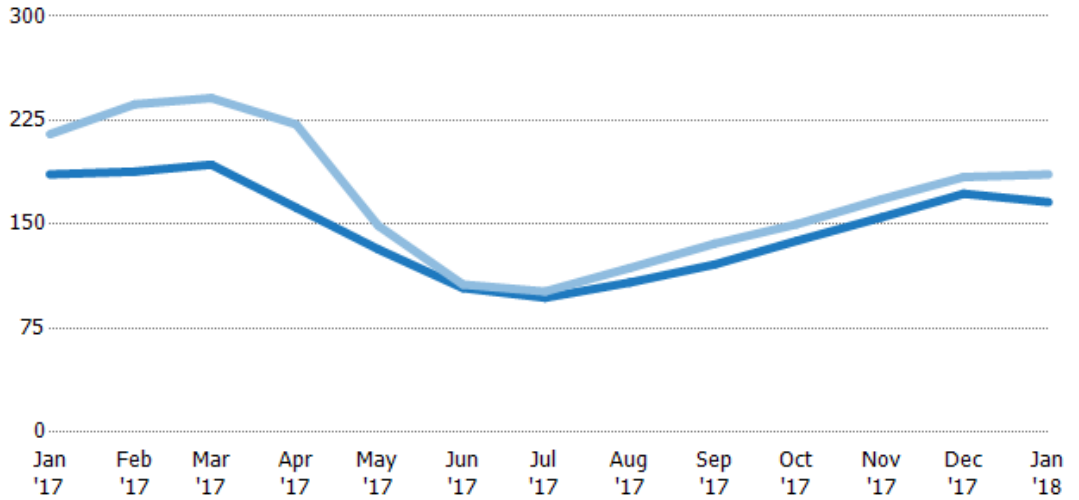
Median Est Value	\$623K	\$636K	\$648K	\$598K	\$578K	\$602K	\$581K	\$587K	\$611K	\$672K	\$646K	\$642K	\$650K
Median Listing Price	\$750K	\$795K	\$783K	\$762K	\$729K	\$770K	\$750K	\$785K	\$799K	\$949K	\$935K	\$947K	\$969K
Med Listing Price as a % of Med Est Value	120%	125%	121%	127%	126%	128%	129%	134%	131%	141%	145%	147%	149%

Median Days in RPR

The median number of days between when residential properties are first displayed as active listings in RPR and when accepted offers have been noted in RPR.

Filters Used

State: ID
 County: Blaine County, Idaho
 Property Type:
 Condo/Townhouse/Apt, Single
 Family Residence



Month/Year	Days	% Chg.
Jan '18	166	-10.8%
Jan '17	186	-13.5%
Jan '16	215	0.9%

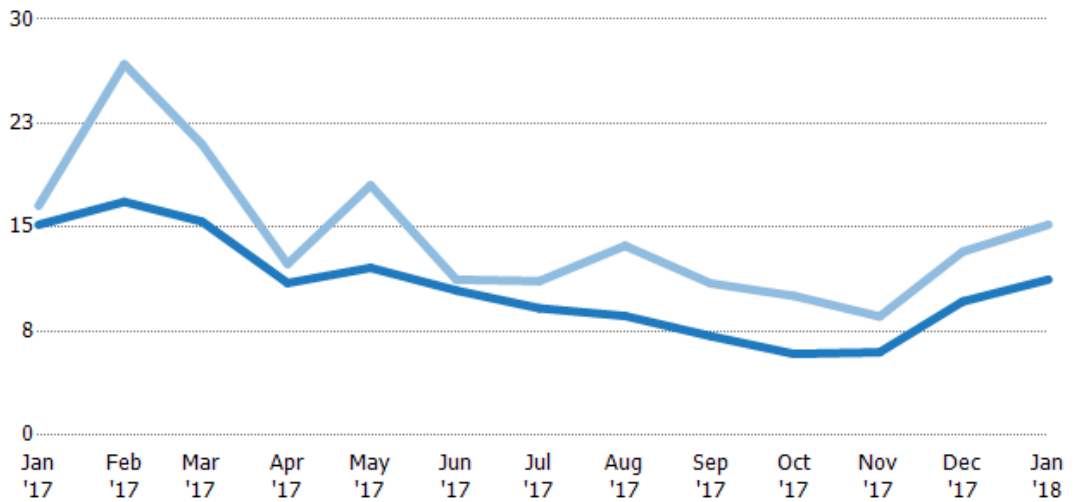
Current Year	186	188	193	162	132	104	97	108	121	138	155	172	166
Prior Year	215	237	241	222	149	107	102	119	136	150	168	184	186
Percent Change from Prior Year	-13%	-21%	-20%	-27%	-11%	-2%	-4%	-9%	-11%	-8%	-8%	-7%	-11%

Months of Inventory

The number of months it would take to exhaust active listings at the current sales rate.

Filters Used

State: ID
 County: Blaine County, Idaho
 Property Type:
 Condo/Townhouse/Apt, Single
 Family Residence



Month/Year	Months	% Chg.
Jan '18	11.2	-26%
Jan '17	15.2	-8.2%
Jan '16	16.5	29%

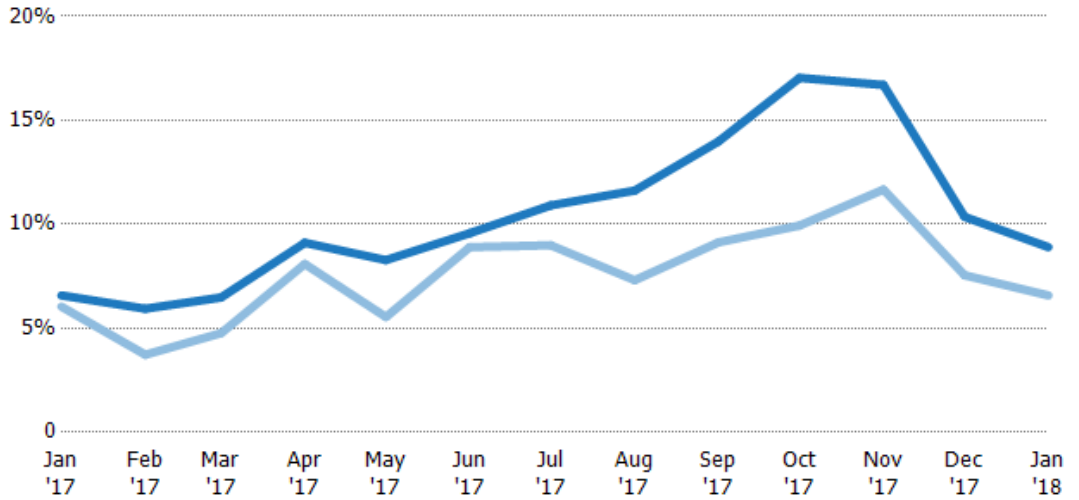
Current Year	15.2	16.8	15.4	11	12.1	10.4	9.16	8.6	7.15	5.87	5.99	9.64	11.2
Prior Year	16.5	26.8	21	12.3	18	11.2	11.1	13.7	10.9	10.1	8.56	13.2	15.2
Percent Change from Prior Year	-8%	-37%	-27%	-11%	-33%	-7%	-18%	-37%	-35%	-42%	-30%	-27%	-26%

Absorption Rate

The percentage of inventory sold per month.

Filters Used

State: ID
 County: Blaine County, Idaho
 Property Type:
 Condo/Townhouse/Apt, Single
 Family Residence



Month/Year	Rate	Chg.
Jan '18	9%	-2.3%
Jan '17	7%	-0.5%
Jan '16	6%	-22.5%

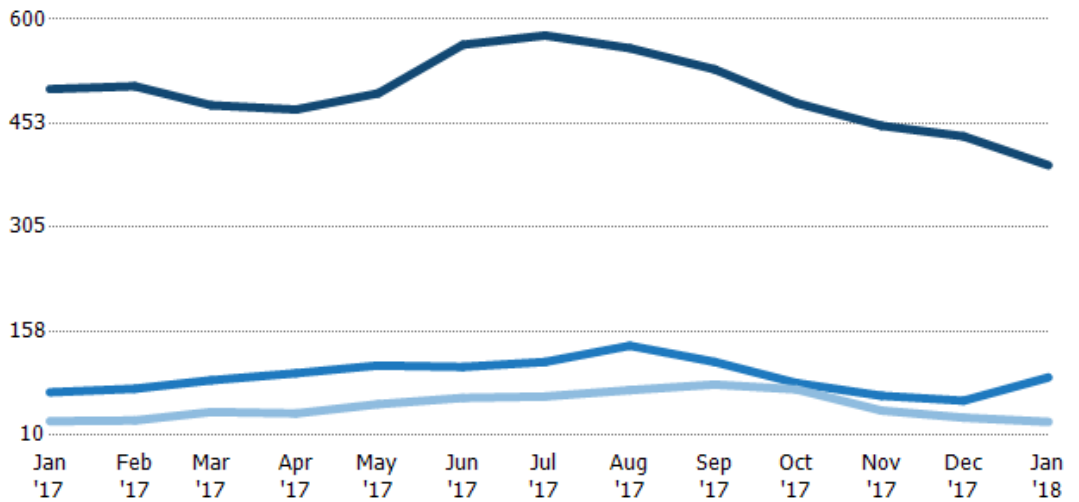
	Jan '17	Feb '17	Mar '17	Apr '17	May '17	Jun '17	Jul '17	Aug '17	Sep '17	Oct '17	Nov '17	Dec '17	Jan '18
Current Year	7%	6%	6%	9%	8%	10%	11%	12%	14%	17%	17%	10%	9%
Prior Year	6%	4%	5%	8%	6%	9%	9%	7%	9%	10%	12%	8%	7%
Change from Prior Year	-1%	-2%	-2%	-1%	-3%	-1%	-2%	-4%	-5%	-7%	-5%	-3%	-2%

Active/Pending/Sold Units

The number of single-family, condominium and townhome properties that were Active, Pending and Sold each month.

Filters Used

State: ID
 County: Blaine County, Idaho
 Property Type:
 Condo/Townhouse/Apt, Single
 Family Residence



	Jan '17	Feb '17	Mar '17	Apr '17	May '17	Jun '17	Jul '17	Aug '17	Sep '17	Oct '17	Nov '17	Dec '17	Jan '18
Active	501	505	478	472	495	564	577	559	529	481	449	434	393
Pending	71	76	88	98	109	107	114	137	114	84	66	59	92
Sold	30	31	43	41	54	63	65	74	82	75	45	35	29

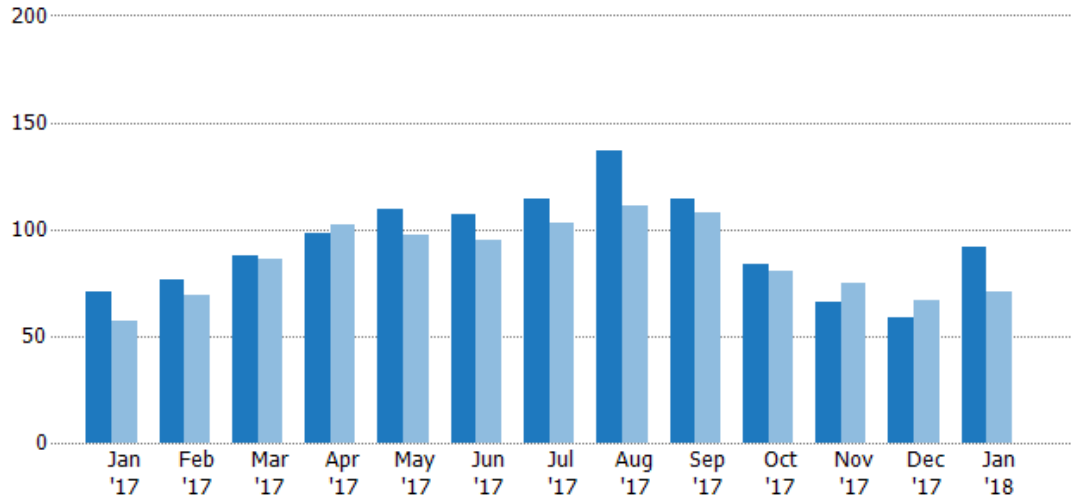
Pending Sales

The number of single-family, condominium and townhome properties with accepted offers that were available at the end each month.

Filters Used

State: ID
 County: Blaine County, Idaho
 Property Type:
 Condo/Townhouse/Apt, Single Family Residence

Month/Year	Count	% Chg.
Jan '18	92	29.6%
Jan '17	71	24.6%
Jan '16	57	10.5%



	Jan '17	Feb '17	Mar '17	Apr '17	May '17	Jun '17	Jul '17	Aug '17	Sep '17	Oct '17	Nov '17	Dec '17	Jan '18
Current Year	71	76	88	98	109	107	114	137	114	84	66	59	92
Prior Year	57	69	86	102	97	95	103	111	108	80	75	67	71
Percent Change from Prior Year	25%	10%	2%	-4%	12%	13%	11%	23%	6%	5%	-12%	-12%	30%

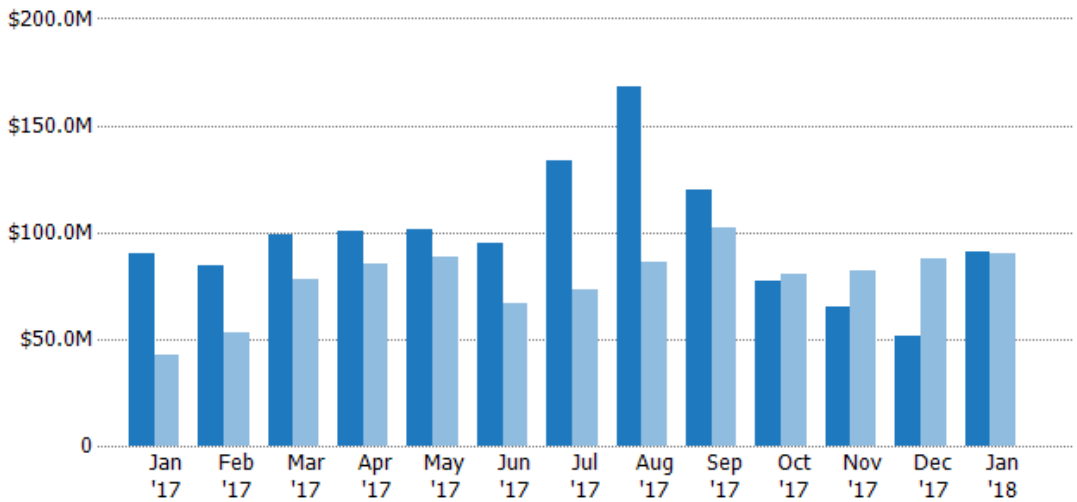
Pending Sales Volume

The sum of the sales price of single-family, condominium and townhome properties with accepted offers that were available at the end of each month.

Filters Used

State: ID
 County: Blaine County, Idaho
 Property Type:
 Condo/Townhouse/Apt, Single Family Residence

Month/Year	Volume	% Chg.
Jan '18	\$91M	0.8%
Jan '17	\$90.3M	112.8%
Jan '16	\$42.4M	-11.9%



	Jan '17	Feb '17	Mar '17	Apr '17	May '17	Jun '17	Jul '17	Aug '17	Sep '17	Oct '17	Nov '17	Dec '17	Jan '18
Current Year	\$90.3M	\$84.7M	\$99.3M	\$100M	\$102M	\$94.7M	\$134M	\$168M	\$120M	\$77.1M	\$64.8M	\$51.2M	\$91M
Prior Year	\$42.4M	\$52.9M	\$78M	\$85.5M	\$88.8M	\$66.6M	\$73M	\$86.2M	\$102M	\$80.4M	\$82.1M	\$87.9M	\$90.3M
Percent Change from Prior Year	113%	60%	27%	17%	14%	42%	83%	95%	17%	-4%	-21%	-42%	1%

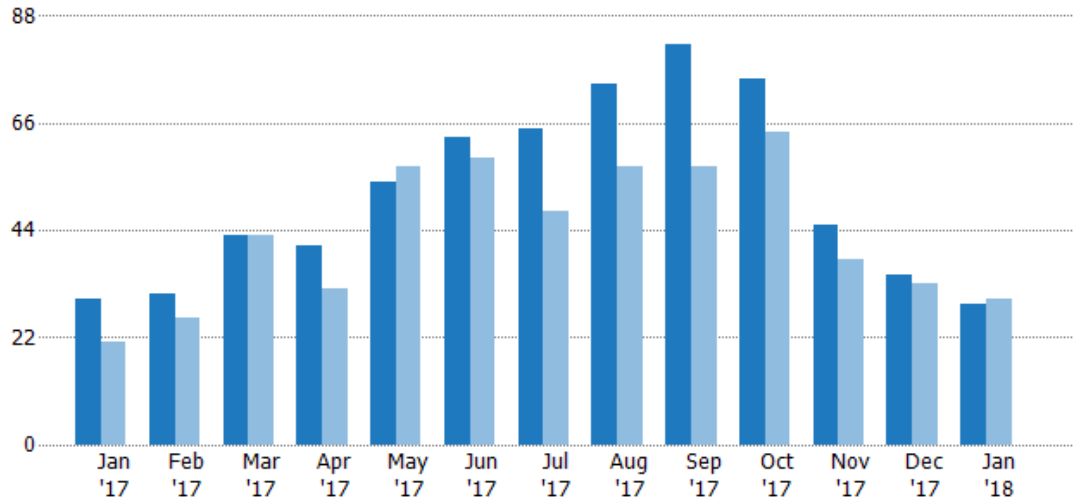
Closed Sales

The total number of single-family, condominium and townhome properties sold each month.

Filters Used

State: ID
 County: Blaine County, Idaho
 Property Type:
 Condo/Townhouse/Apt, Single Family Residence

Month/Year	Count	% Chg.
Jan '18	29	-3.3%
Jan '17	30	42.9%
Jan '16	21	33.3%



Current Year	30	31	43	41	54	63	65	74	82	75	45	35	29
Prior Year	21	26	43	32	57	59	48	57	57	64	38	33	30
Percent Change from Prior Year	43%	19%	0%	28%	-5%	7%	35%	30%	44%	17%	18%	6%	-3%

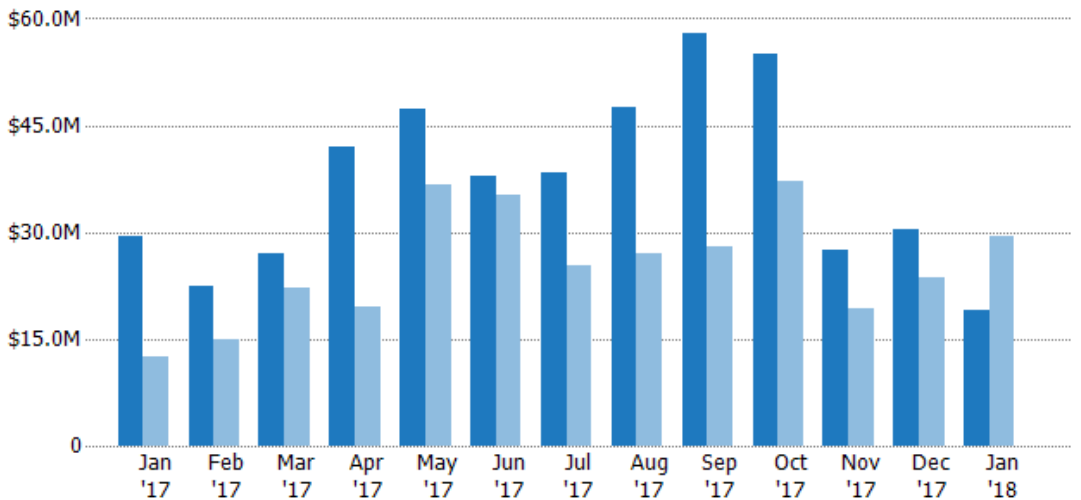
Closed Sales Volume

The sum of the sales price of single-family, condominium and townhome properties sold each month.

Filters Used

State: ID
 County: Blaine County, Idaho
 Property Type:
 Condo/Townhouse/Apt, Single Family Residence

Month/Year	Volume	% Chg.
Jan '18	\$19M	-35.5%
Jan '17	\$29.4M	136.3%
Jan '16	\$12.4M	27%



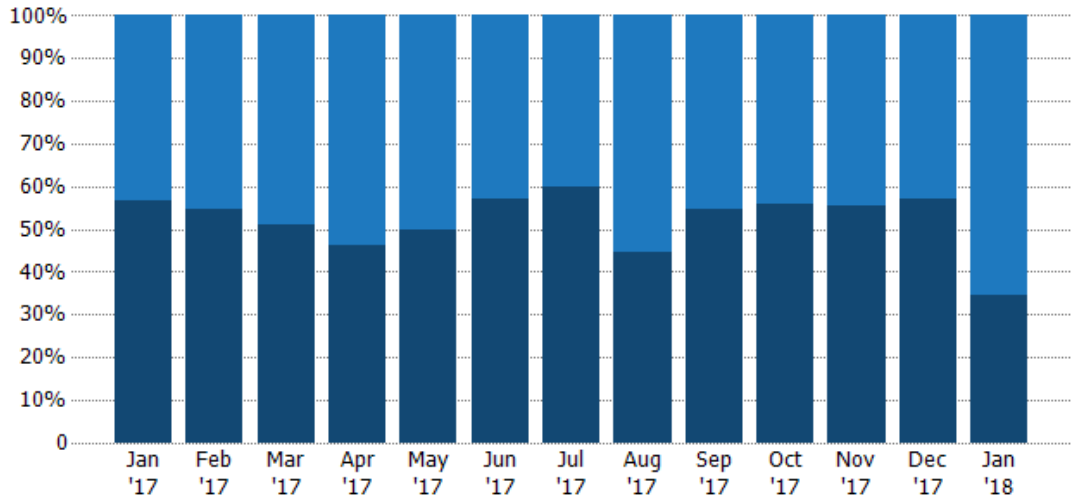
Current Year	\$29.4M	\$22.4M	\$27M	\$41.9M	\$47.3M	\$37.9M	\$38.4M	\$47.5M	\$58M	\$55.1M	\$27.6M	\$30.4M	\$19M
Prior Year	\$12.4M	\$14.9M	\$22.3M	\$19.6M	\$36.6M	\$35.2M	\$25.3M	\$27M	\$27.9M	\$37.1M	\$19.2M	\$23.7M	\$29.4M
Percent Change from Prior Year	136%	50%	21%	114%	29%	8%	52%	76%	108%	48%	43%	28%	-35%

Closed Sales by Property Type

The percentage of single-family, condominium and townhome properties sold each month by property type.

Filters Used

State: ID
 County: Blaine County, Idaho
 Property Type:
 Condo/Townhouse/Apt, Single
 Family Residence



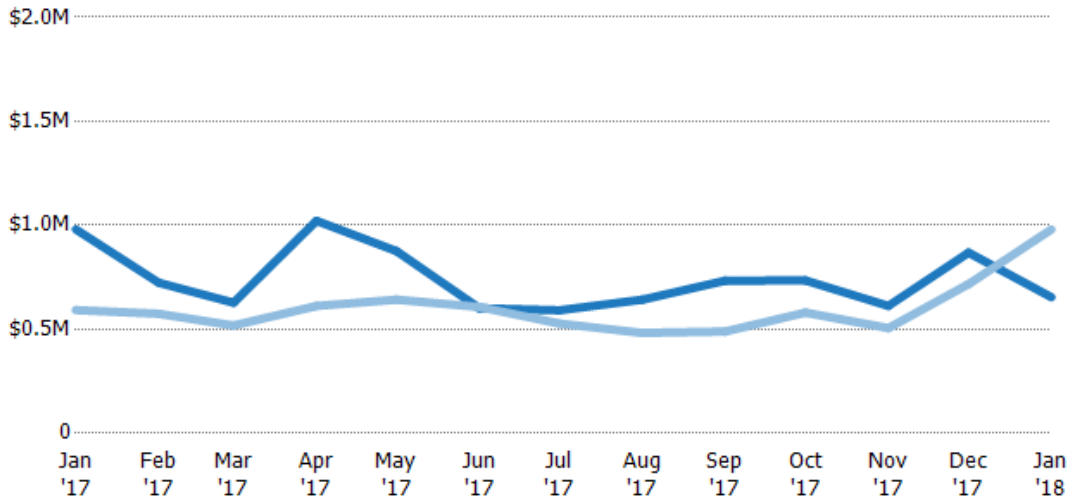
Condo/Townhouse	43%	45%	49%	54%	50%	43%	40%	55%	45%	44%	44%	43%	66%
Single Family Residence	57%	55%	51%	46%	50%	57%	60%	45%	55%	56%	56%	57%	34%

Average Sales Price

The average sales price of the single-family, condominium and townhome properties sold each month.

Filters Used

State: ID
 County: Blaine County, Idaho
 Property Type:
 Condo/Townhouse/Apt, Single
 Family Residence



Current Year	\$980K	\$724K	\$628K	\$1.02M	\$876K	\$601K	\$591K	\$643K	\$734K	\$735K	\$612K	\$869K	\$654K
Prior Year	\$592K	\$575K	\$518K	\$612K	\$642K	\$607K	\$527K	\$482K	\$489K	\$580K	\$506K	\$717K	\$980K
Percent Change from Prior Year	65%	26%	21%	67%	36%	-1%	12%	33%	50%	27%	21%	21%	-33%

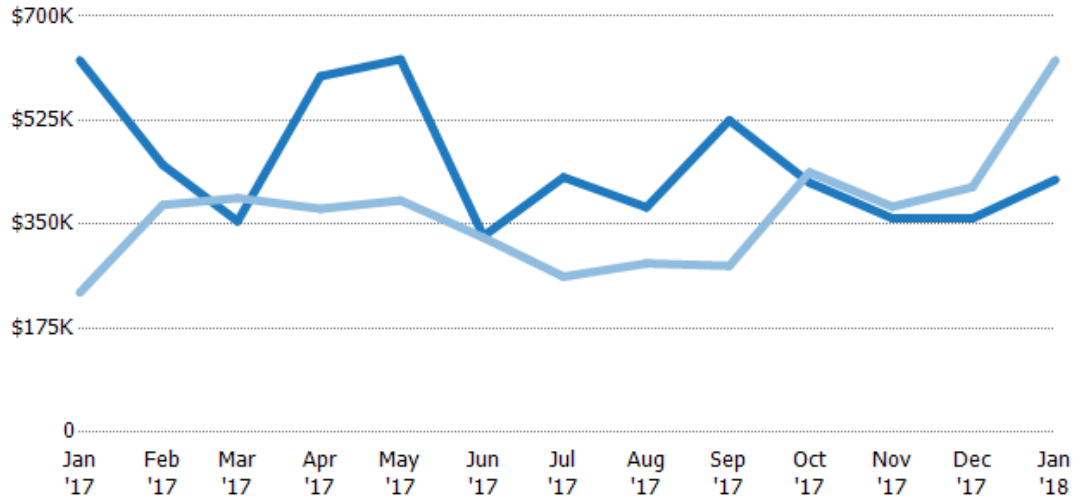
Median Sales Price

The median sales price of the single-family, condominium and townhome properties sold each month.

Filters Used

State: ID
 County: Blaine County, Idaho
 Property Type:
 Condo/Townhouse/Apt, Single
 Family Residence

Month/ Year	Price	% Chg.
Jan '18	\$425K	-32.1%
Jan '17	\$626K	166.3%
Jan '16	\$235K	34.8%



Current Year	\$626K	\$450K	\$355K	\$599K	\$628K	\$330K	\$429K	\$379K	\$525K	\$420K	\$360K	\$360K	\$425K
Prior Year	\$235K	\$383K	\$394K	\$376K	\$390K	\$328K	\$262K	\$284K	\$280K	\$438K	\$380K	\$413K	\$626K
Percent Change from Prior Year	166%	18%	-10%	59%	61%	1%	64%	33%	88%	-4%	-5%	-13%	-32%

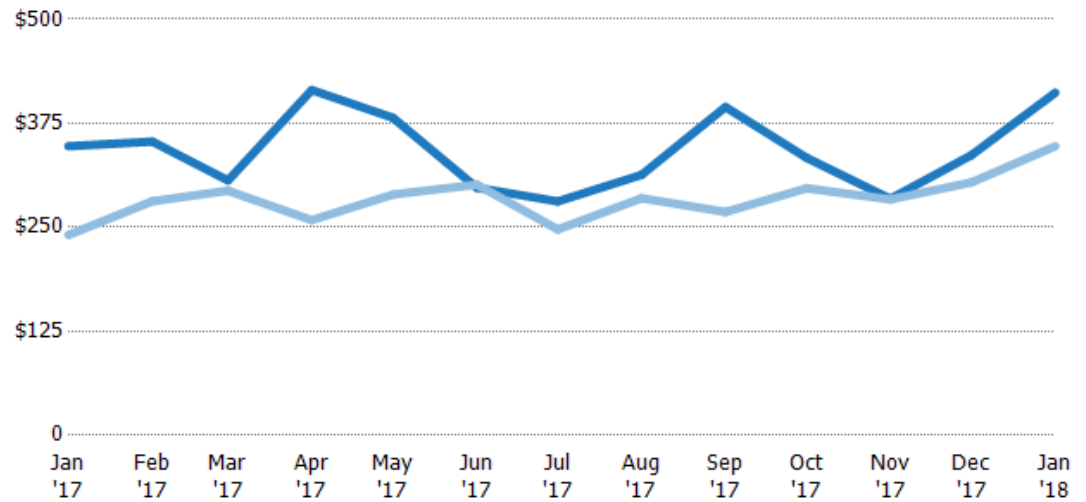
Average Sales Price per Sq Ft

The average of the sales price divided by the living area of properties sold each month.

Filters Used

State: ID
 County: Blaine County, Idaho
 Property Type:
 Condo/Townhouse/Apt, Single
 Family Residence

Month/ Year	Price/sq ft	% Chg.
Jan '18	\$412	18.5%
Jan '17	\$347	44.3%
Jan '16	\$241	29.5%



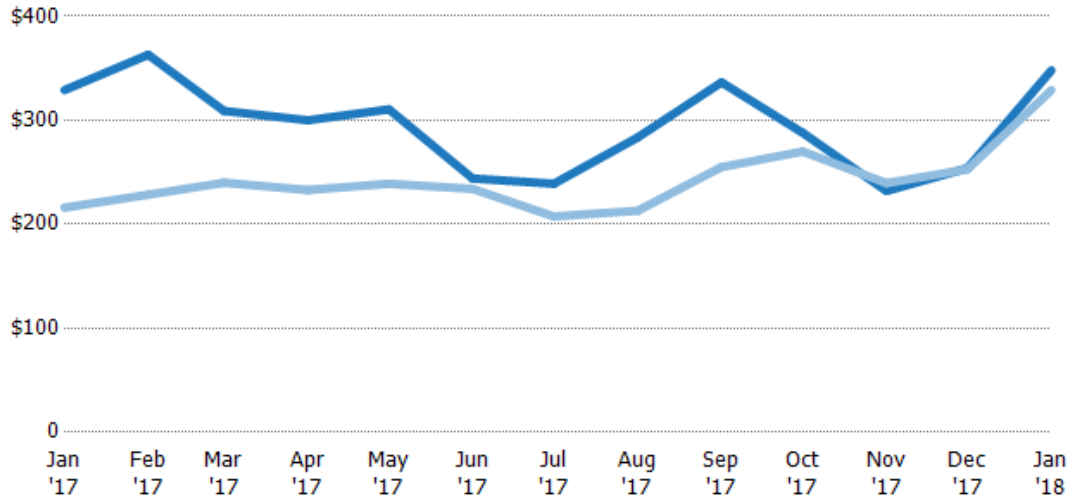
Current Year	\$347	\$353	\$306	\$415	\$382	\$298	\$281	\$313	\$395	\$333	\$284	\$337	\$412
Prior Year	\$241	\$281	\$294	\$259	\$289	\$301	\$247	\$285	\$268	\$297	\$283	\$304	\$347
Percent Change from Prior Year	44%	26%	4%	60%	32%	-1%	14%	10%	47%	12%	0%	11%	19%

Median Sales Price per Sq Ft

The median of the sales price divided by the living area of properties sold each month.

Filters Used

State: ID
 County: Blaine County, Idaho
 Property Type:
 Condo/Townhouse/Apt, Single
 Family Residence



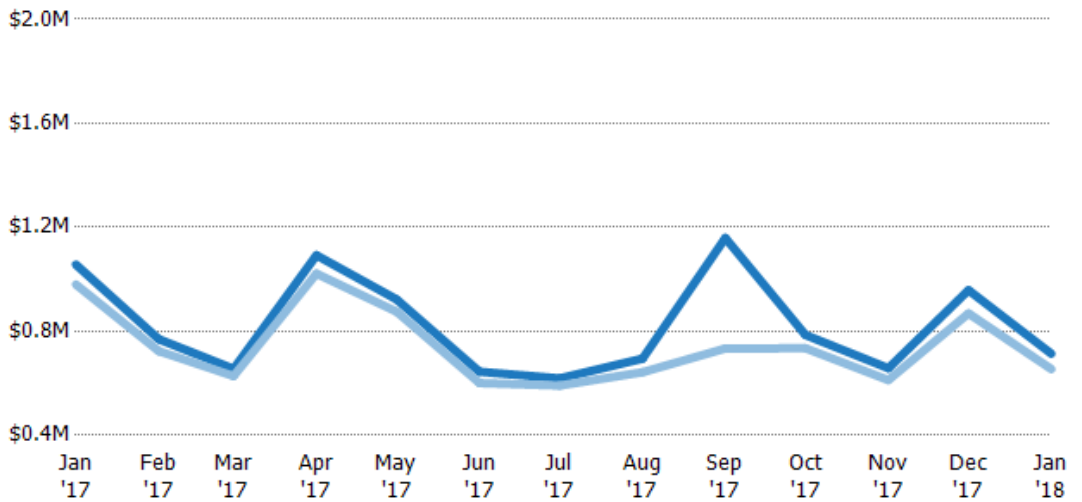
	Jan '17	Feb '17	Mar '17	Apr '17	May '17	Jun '17	Jul '17	Aug '17	Sep '17	Oct '17	Nov '17	Dec '17	Jan '18
Current Year	\$329	\$363	\$309	\$300	\$311	\$244	\$239	\$284	\$337	\$288	\$232	\$254	\$348
Prior Year	\$216	\$229	\$240	\$233	\$239	\$234	\$208	\$213	\$255	\$270	\$240	\$253	\$329
Percent Change from Prior Year	52%	59%	29%	29%	30%	4%	15%	33%	32%	7%	-3%	0%	6%

Average Sales Price vs Average Listing Price

The average sales price as a percentage of the average listing price for properties sold each month.

Filters Used

State: ID
 County: Blaine County, Idaho
 Property Type:
 Condo/Townhouse/Apt, Single
 Family Residence



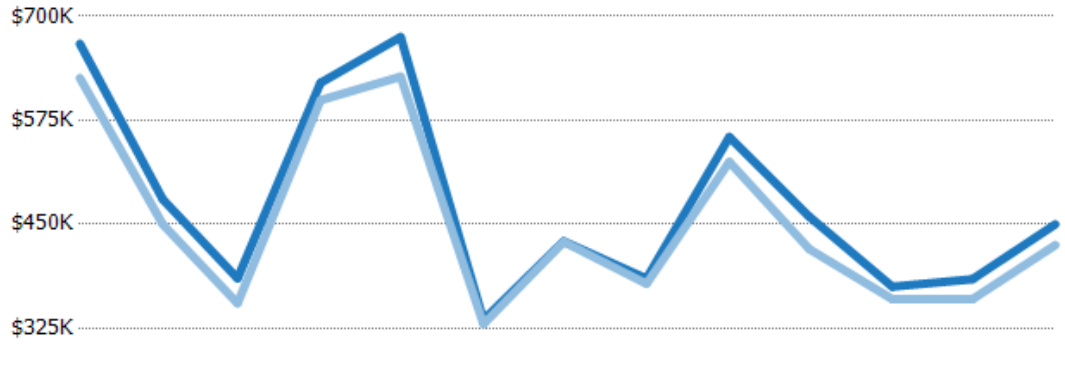
	Jan '17	Feb '17	Mar '17	Apr '17	May '17	Jun '17	Jul '17	Aug '17	Sep '17	Oct '17	Nov '17	Dec '17	Jan '18
Avg List Price	\$1.06M	\$770K	\$655K	\$1.09M	\$922K	\$644K	\$619K	\$695K	\$1.16M	\$786K	\$658K	\$958K	\$714K
Avg Sales Price	\$980K	\$724K	\$628K	\$1.02M	\$876K	\$601K	\$591K	\$643K	\$734K	\$735K	\$612K	\$869K	\$654K
Avg Sales Price as a % of Avg List Price	93%	94%	96%	94%	95%	93%	96%	93%	63%	94%	93%	91%	92%

Median Sales Price vs Median Listing Price

The median sales price as a percentage of the median listing price for properties sold each month.

Filters Used

State: ID
 County: Blaine County, Idaho
 Property Type:
 Condo/Townhouse/Apt, Single
 Family Residence



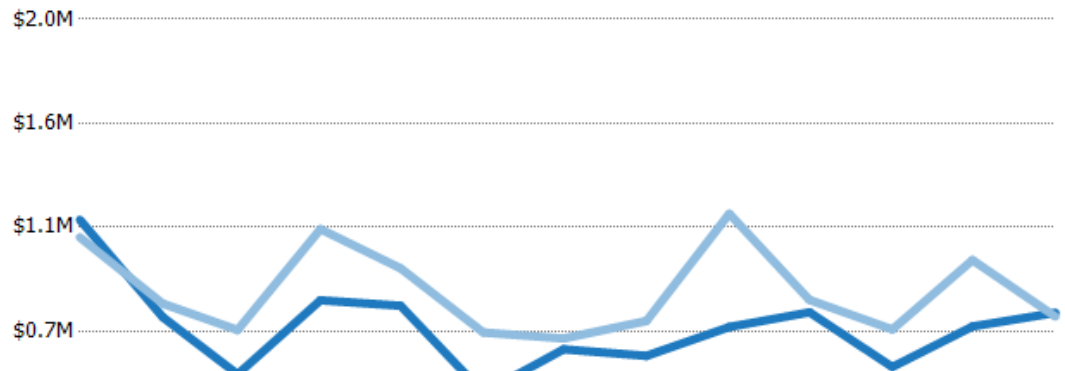
	Jan '17	Feb '17	Mar '17	Apr '17	May '17	Jun '17	Jul '17	Aug '17	Sep '17	Oct '17	Nov '17	Dec '17	Jan '18
Median List Price	\$667K	\$480K	\$385K	\$620K	\$675K	\$335K	\$430K	\$385K	\$555K	\$459K	\$375K	\$384K	\$450K
Median Sales Price	\$626K	\$450K	\$355K	\$599K	\$628K	\$330K	\$429K	\$379K	\$525K	\$420K	\$360K	\$360K	\$425K
Med Sales Price as a % of Med List Price	94%	94%	92%	97%	93%	99%	100%	98%	95%	92%	96%	94%	94%

Average Sales Price vs Average Est Value

The average sales price as a percentage of the average AVM or RVM® valuation estimate for properties sold each month.

Filters Used

State: ID
 County: Blaine County, Idaho
 Property Type:
 Condo/Townhouse/Apt, Single
 Family Residence



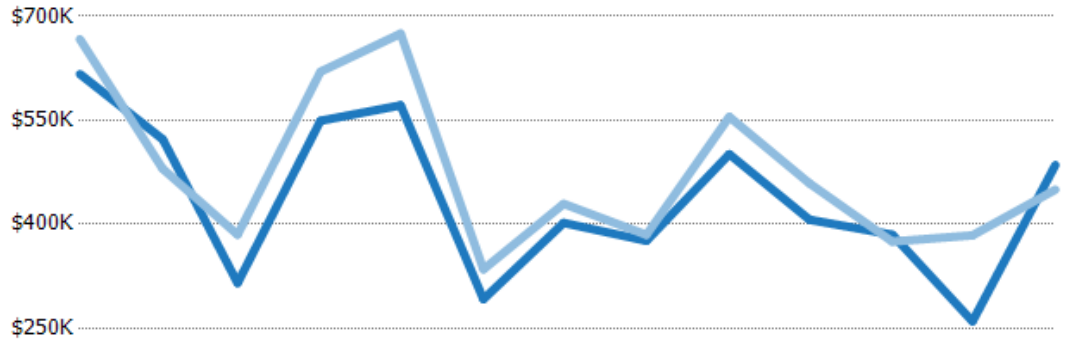
	Jan '17	Feb '17	Mar '17	Apr '17	May '17	Jun '17	Jul '17	Aug '17	Sep '17	Oct '17	Nov '17	Dec '17	Jan '18
Avg Est Value	\$1.13M	\$711K	\$464K	\$784K	\$761K	\$383K	\$572K	\$544K	\$669K	\$732K	\$495K	\$671K	\$730K
Avg Sales Price	\$1.06M	\$770K	\$655K	\$1.09M	\$922K	\$644K	\$619K	\$695K	\$1.16M	\$786K	\$658K	\$958K	\$714K
Avg Sales Price as a % of Avg Est Value	93%	108%	141%	139%	121%	168%	108%	128%	173%	107%	133%	143%	98%

Median Sales Price vs Median Est Value

The median sales price as a percent of the median AVM or RVM® valuation estimate for properties sold each month.

Filters Used

State: ID
 County: Blaine County, Idaho
 Property Type:
 Condo/Townhouse/Apt, Single
 Family Residence



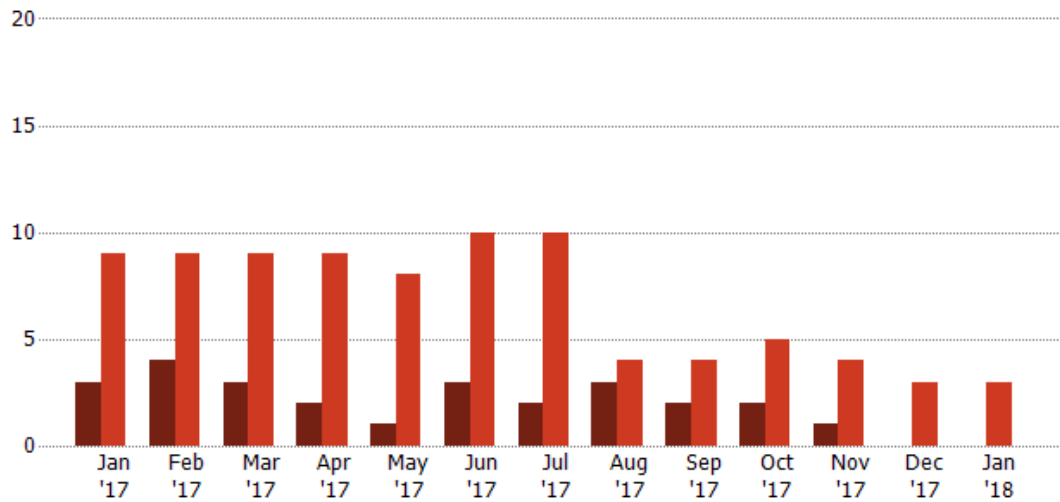
	Jan '17	Feb '17	Mar '17	Apr '17	May '17	Jun '17	Jul '17	Aug '17	Sep '17	Oct '17	Nov '17	Dec '17	Jan '18
Median Est Value	\$617K	\$523K	\$315K	\$549K	\$572K	\$292K	\$402K	\$376K	\$501K	\$407K	\$385K	\$260K	\$485K
Median Sales Price	\$667K	\$480K	\$385K	\$620K	\$675K	\$335K	\$430K	\$385K	\$555K	\$459K	\$375K	\$384K	\$450K
Med Sales Price as a % of Med Est Value	108%	92%	122%	113%	118%	115%	107%	102%	111%	113%	97%	148%	93%

Distressed Listings

The number of distressed single-family, condominium and townhome properties that were for sale at the end of each month.

Filters Used

State: ID
 County: Blaine County, Idaho
 Property Type:
 Condo/Townhouse/Apt, Single
 Family Residence



	Jan '17	Feb '17	Mar '17	Apr '17	May '17	Jun '17	Jul '17	Aug '17	Sep '17	Oct '17	Nov '17	Dec '17	Jan '18
Current Year	3	4	3	2	1	3	2	3	2	2	1	-	-
Prior Year	9	9	9	9	8	10	10	4	4	5	4	3	3
Percent Change from Prior Year	-67%	-56%	-67%	-78%	-88%	-70%	-80%	-25%	-50%	-60%	-75%	-100%	-100%

Listing Activity by ZIP

Jan 2018

ZIP	Listings (Month End)	Listing Volume (Month End)	Avg Listing Price	Median Listing Price	Avg Listing Price per Sq Ft	Median Listing Price per Sq Ft	Months of Inventory	Absorption Rate %
83313	20	\$21,204,900	\$1,060,245	\$562,000	\$290	\$221		
83320	3	\$3,625,000	\$1,208,333	\$665,000	\$242	\$261		
83333	85	\$107,441,300	\$1,264,015	\$595,000	\$321	\$254	12	8.23 %
83340	193	\$444,158,850	\$2,301,341	\$1,350,000	\$570	\$482	13	7.77 %
83348	2	\$4,112,000	\$2,056,000	\$2,056,000	\$535	\$535		
83352	3	\$259,500	\$86,500	\$65,000	\$126	\$126		
83353	87	\$147,632,895	\$1,696,930	\$1,175,000	\$479	\$430	12	8.04 %

Sales Activity by ZIP

Jan 2018

ZIP	Pendings (Month End)	Pending Volume (Month End)	Sales	Sales Volume	Avg Sales Price	Median Sales Price	Avg Sales Price per Sq Ft	Median Sales Price per Sq Ft	Median Days In RPR
83333	38	\$25,281,300	7	\$2,746,500	\$399,843	\$309,000	\$195	\$183	66
83340	21	\$38,939,999	15	\$11,713,999	\$873,767	\$675,000	\$483	\$469	119
83353	25	\$24,366,300	7	\$4,516,000	\$683,986	\$449,900	\$337	\$277	149

Appendix

The metrics that are calculated by RPR® may show the same general trends as those published by other sources (i.e. MLS, Associations or vendors), but because of our processes and parcel-centric approach, some variation may occur. Data sources include MLS's, where licensed, and public records for more in-depth metrics on distressed properties.

Report Details

Report Name: Monthly Market Data Report

Run Date: 02/07/2018

Scheduled: Yes

Report Date Range: From 1/2017 To: 1/2018

Information Included

- Include Cover Sheet
- Include Key Metric Summary *
- Include Metrics By
- Averages
- Include Appendix
- Medians

** The Key Metrics Table's YTD median calculations are calculated using a weighted average of the median values for each month that is included.*

MLS Filter

MLS: All

Listing Filters

Property Types: Condo/Townhouse/Apt Single Family Residence

Sales Types: All

Price Range: None

Location Filters

State: All

County: Blaine County, Idaho

ZIP Code: All

Listing Activity Charts

- New Listings
- Active Listings
- Avg/Med Listing Price
- Avg/Med Listing Price per Sq Ft
- Avg/Med Listing Price vs Est Value
- Median Days in RPR
- Months of Inventory
- Absorption Rate

Sales Activity Charts

- Active/Pending/Sold
- New Pending Sales
- Pending Sales
- Closed Sales
- Avg/Med Sales Price
- Avg/Med Sales Price per Sq Ft
- Avg/Med Sales Price vs Listing Price
- Avg/Med Sales Price vs Est Value

Distressed Charts

- Distressed Listings
- Distressed Sales

Data Tables Using 1/2018 data

- Listing Activity by ZIP
- Listing Activity by Metro Area
- Sales Activity by ZIP
- Sales Activity by Metro Area